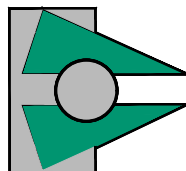
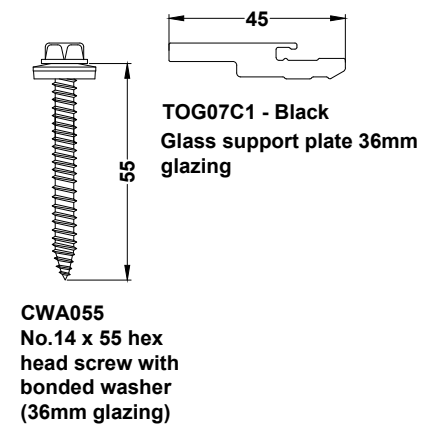
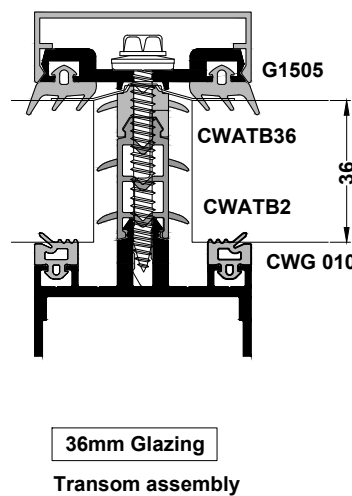
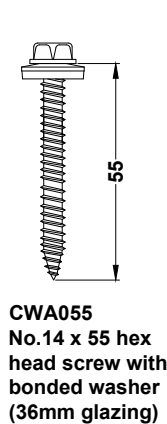
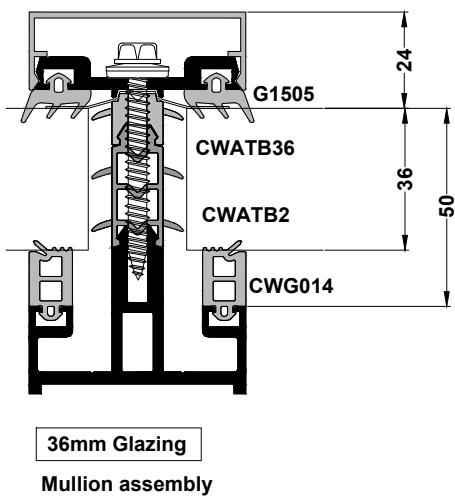
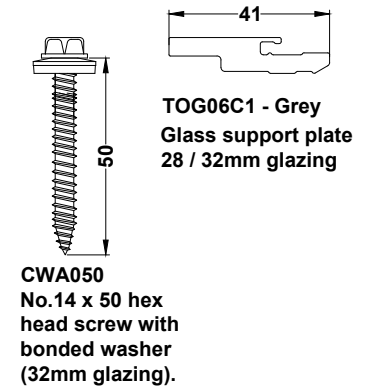
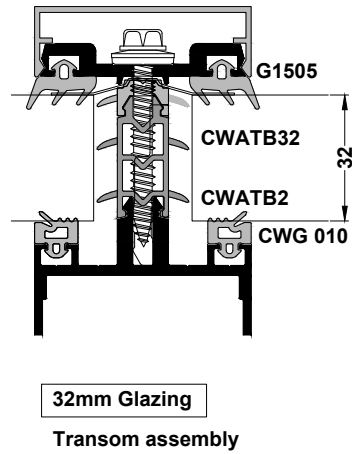
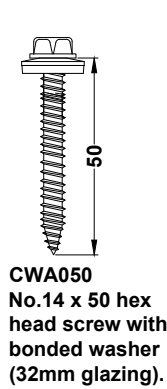
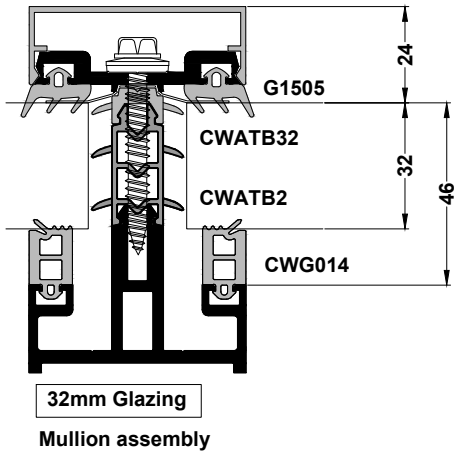
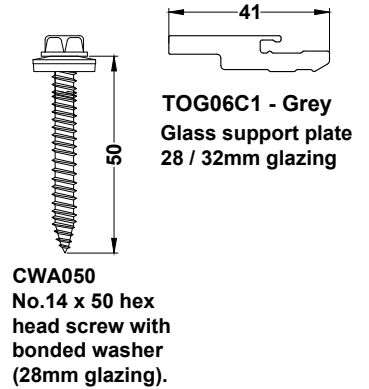
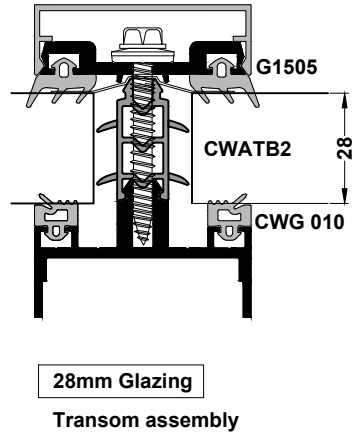
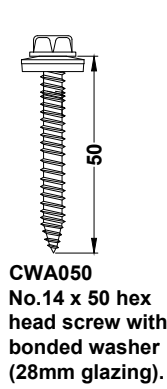
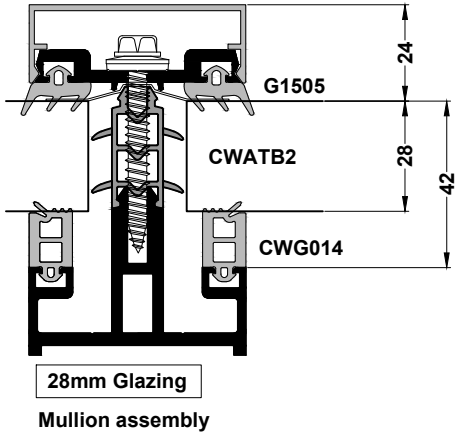


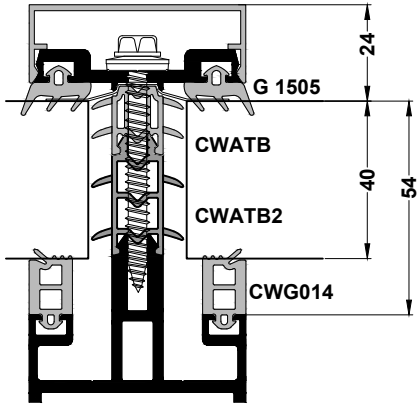
MU 800Hi - CAPPED CURTAIN WALL SYSTEM

Mullion / Transom glass assembly



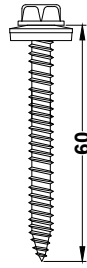
MU 800Hi - CAPPED CURTAIN WALL SYSTEM

Mullion / Transom glass assembly

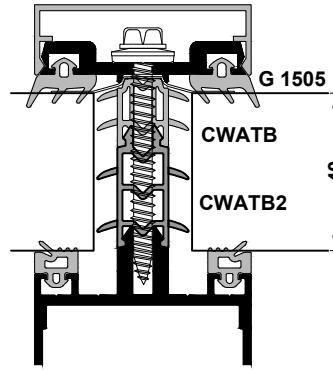


40mm Glazing

Mullion assembly

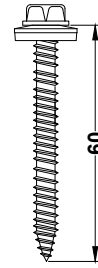


CWA060
No.14 x 60 hex head screw with bonded washer (40mm glazing).

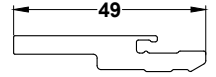


40mm Glazing

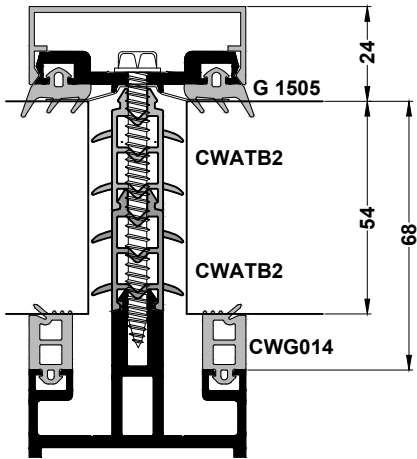
Transom assembly



CWA060
No.14 x 60 hex head screw with bonded washer (40mm glazing).

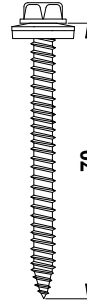


TOG09C1 - Blue
Glass support plate
40mm glazing

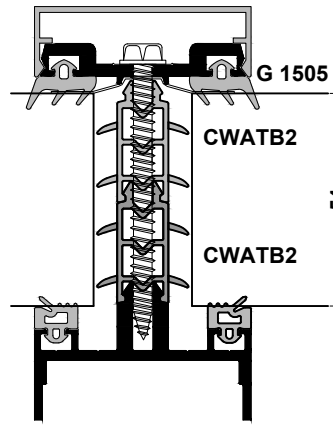


54mm Glazing

Mullion assembly

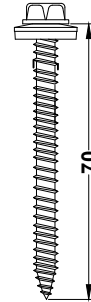


CWA070
No.14 x 70 hex head screw with bonded washer (54mm glazing).

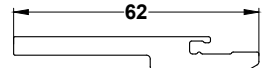


54mm Glazing

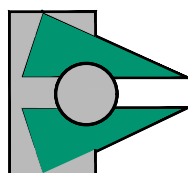
Transom assembly



CWA070
No.14 x 70 hex head screw with bonded washer (54mm glazing).

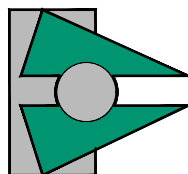
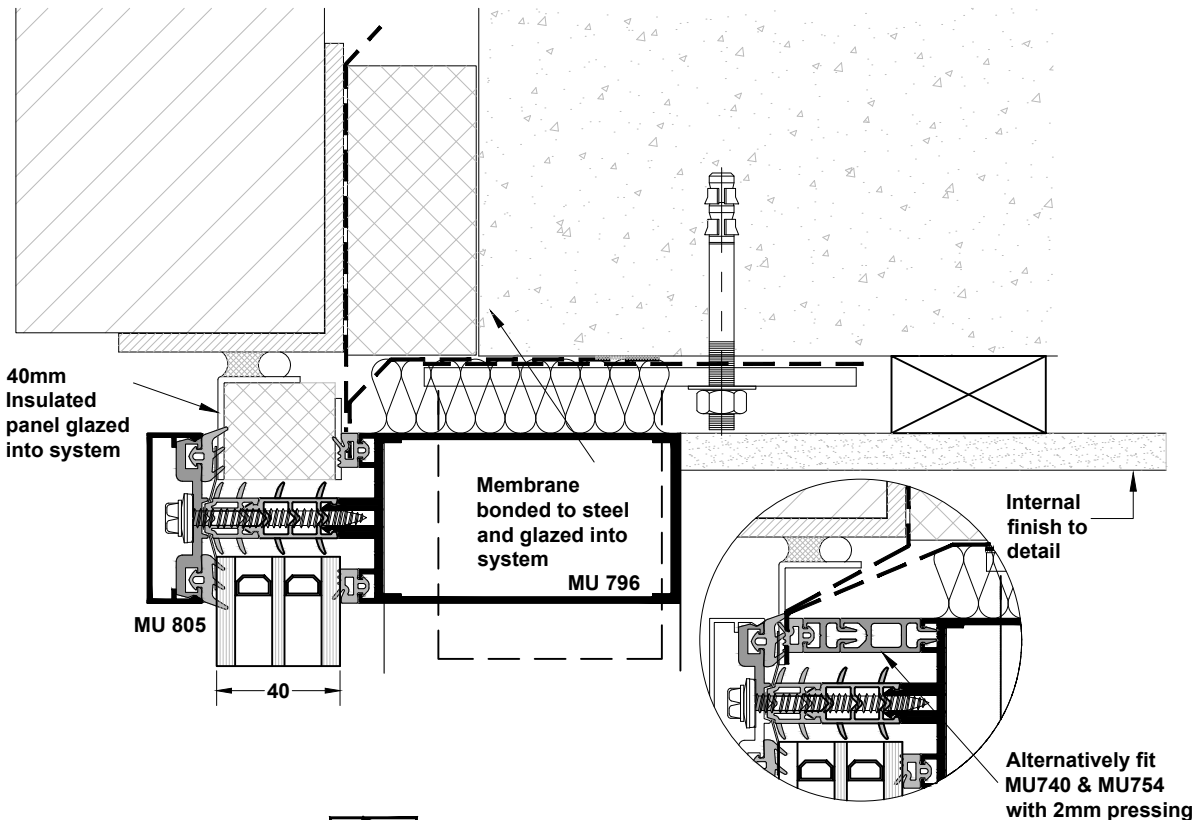
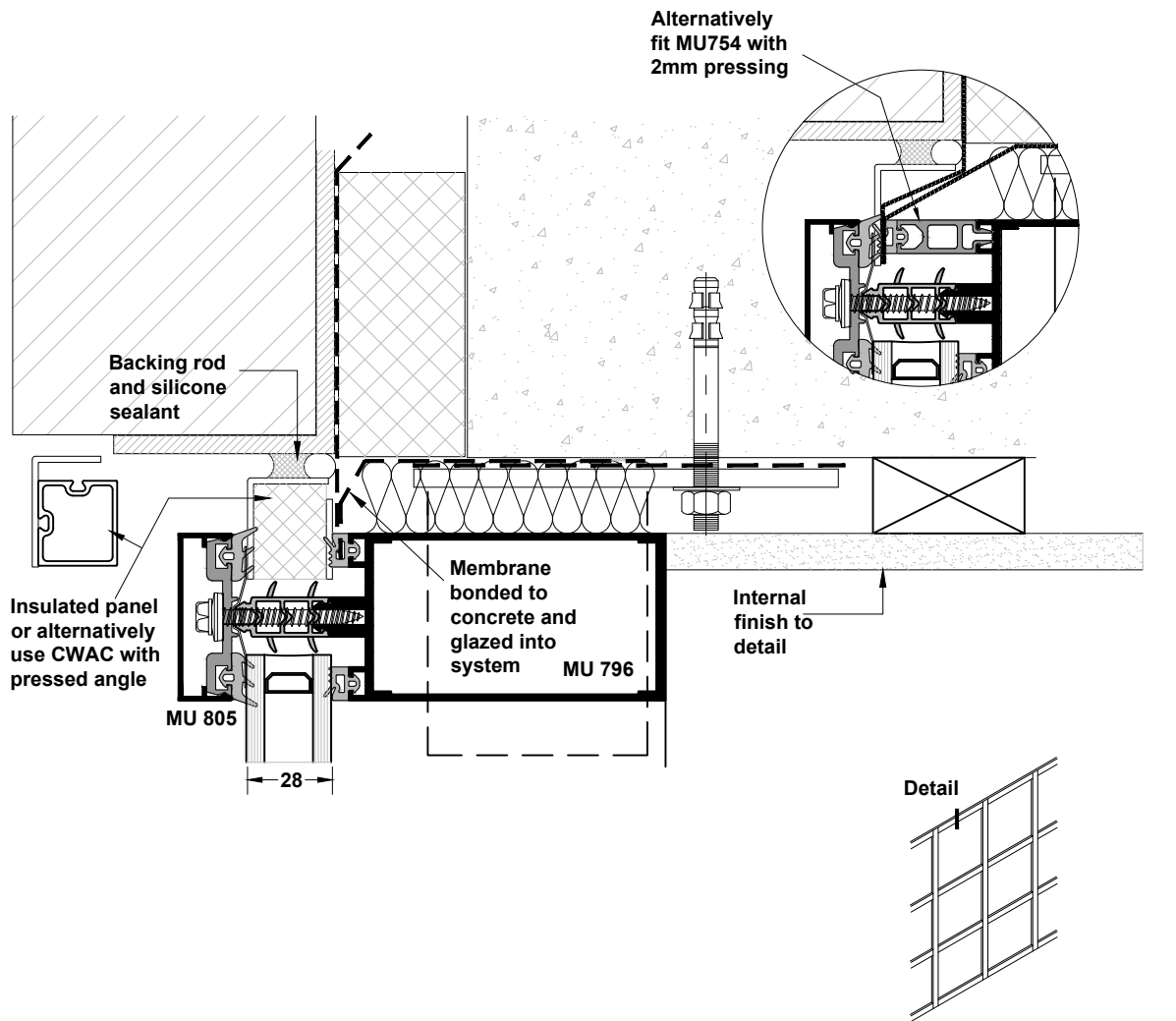


TOG10C1 - Green
Glass support plate
54mm glazing



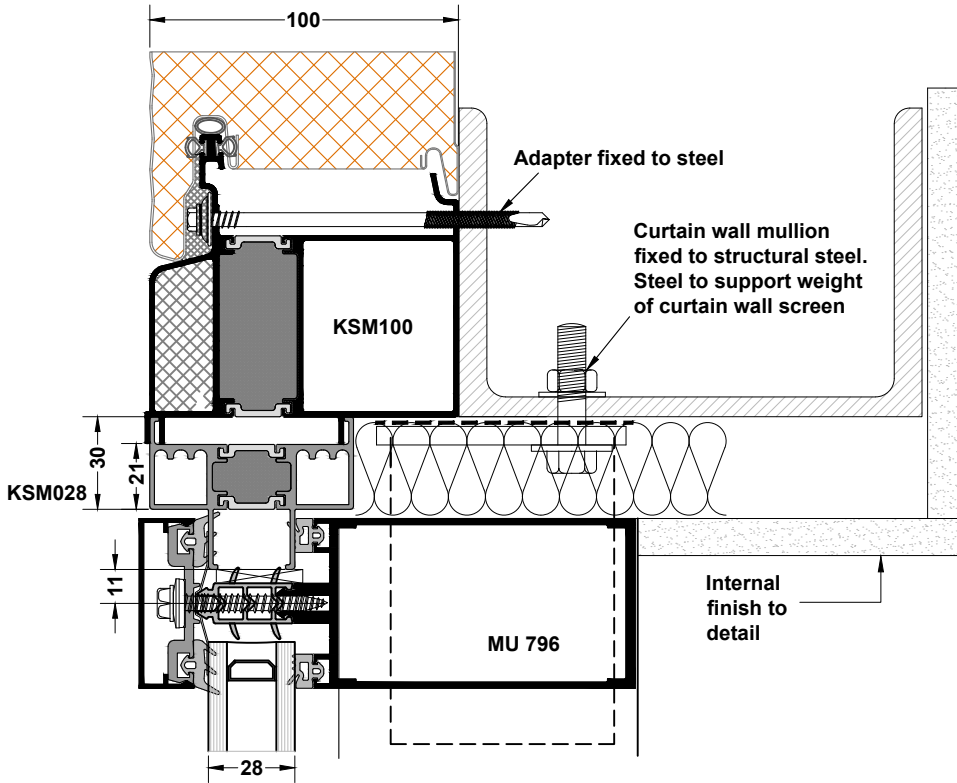
MU 800Hi - CAPPED CURTAIN WALL SYSTEM

Typical head detail

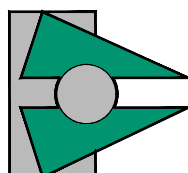
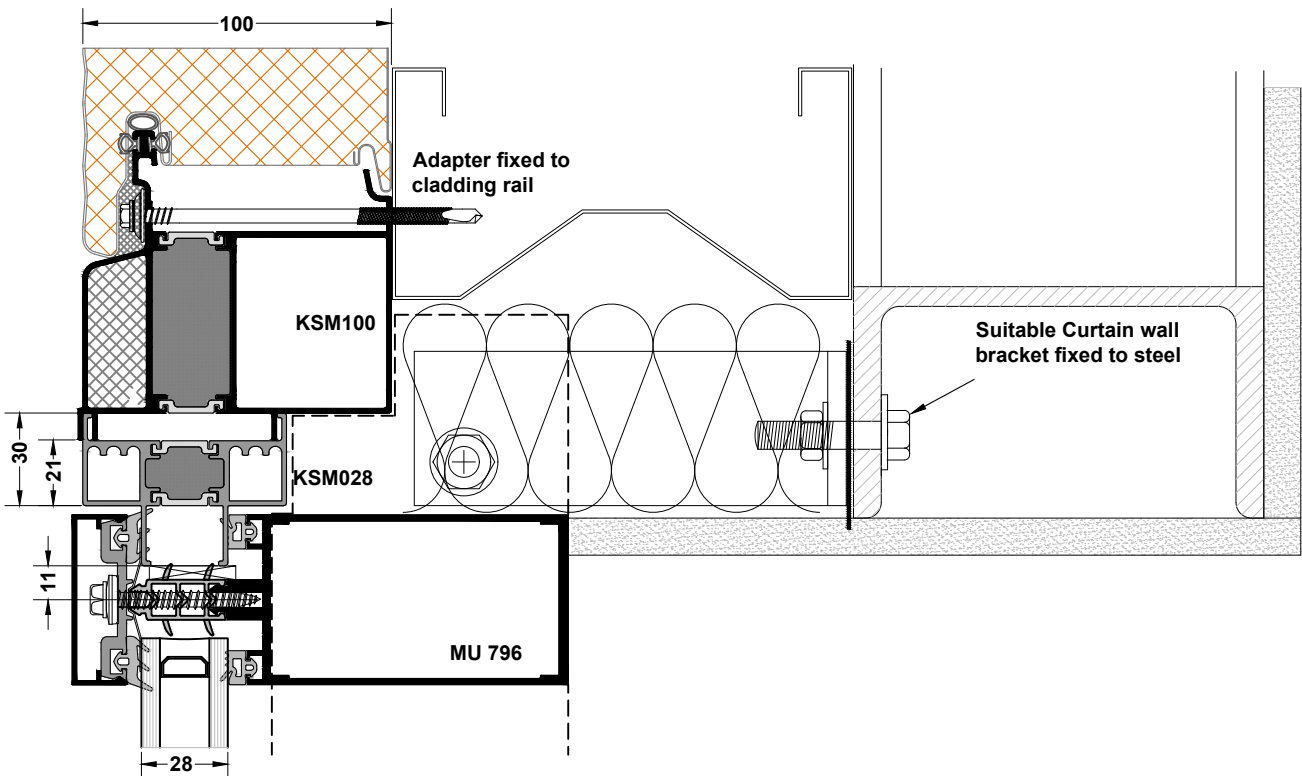
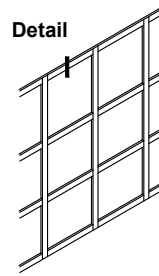


MU 800Hi - CAPPED CURTAIN WALL SYSTEM

Typical head detail with Kingspan cladding

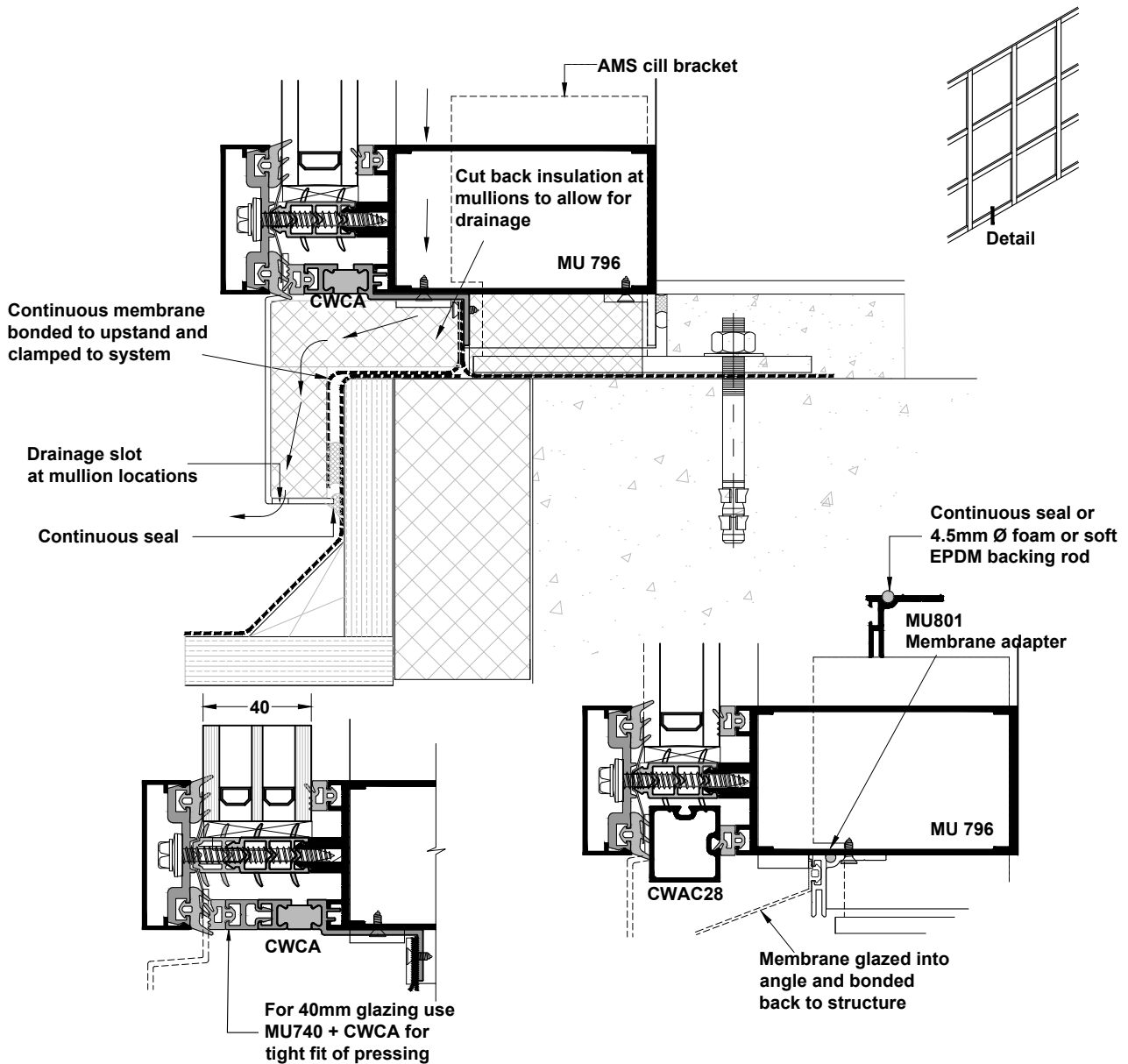


Detail

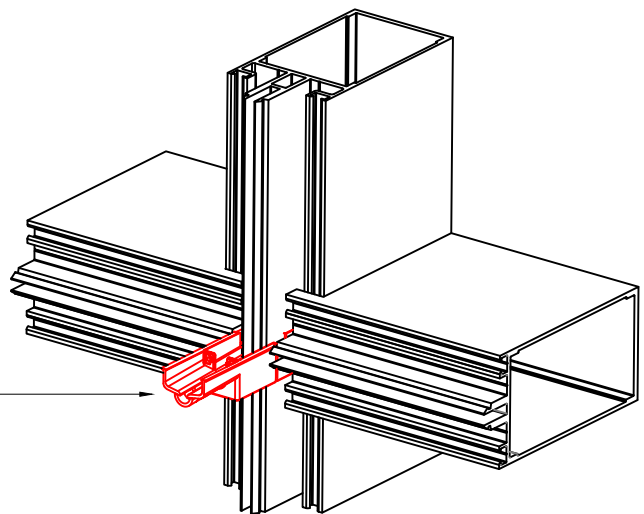
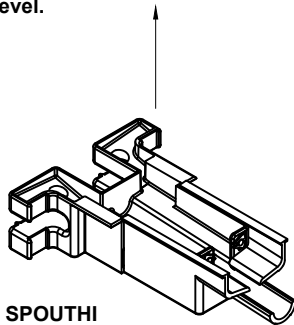


MU 800Hi - CAPPED CURTAIN WALL SYSTEM

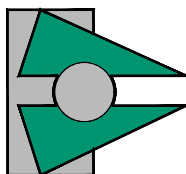
Typical cill detail



Drainage spouts may be fitted in certain locations where it is not possible to fit a flashing e.g. door jambs or where mullion sits on a transom or inside the mullion; in-between the transoms. Spouts should not be used as the primary defence against water ingress at a cill level.

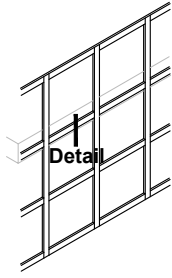


Drainage Spout (SPOUTHI) fitted inside the mullion; in-between the transoms



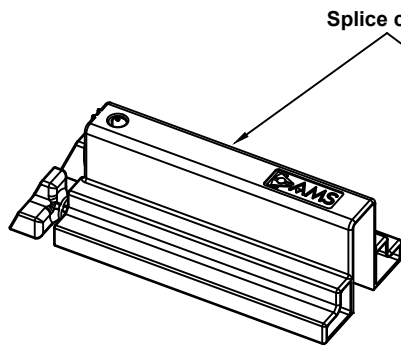
MU 800Hi - CAPPED CURTAIN WALL SYSTEM

Typical fixing detail - splice joint



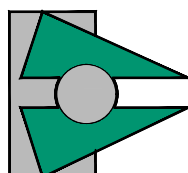
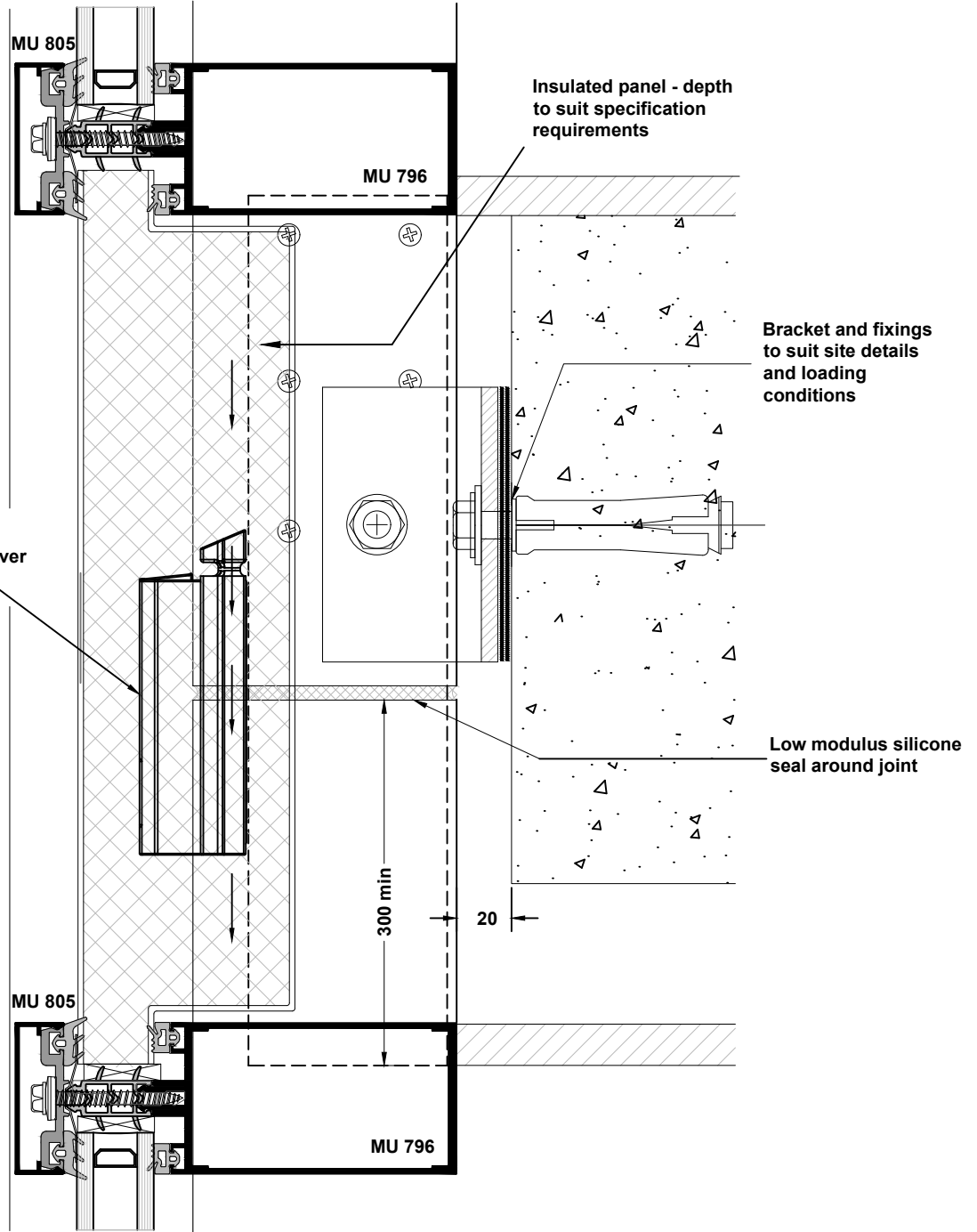
Splice cover (CWASC) is used for splice joint protection and sealing, allowing water drain through the curtain wall system and across splice joints.

Note:
On screens higher than 15m; fit a splice cover (CWASC) at each splice joint location and also a drainage spout (SPOUTHI) in the transom area just above the splice joint.



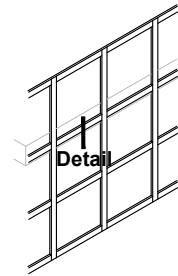
CWASC
Splice cover

Splice cover to be slid into the top or bottom profile and when mullions are set on site slide it over the splice joint and seal.

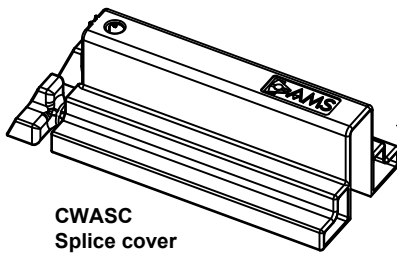


MU 800Hi - CAPPED CURTAIN WALL SYSTEM

Typical fixing detail - splice detail



Note:
On screens higher than 15m;
fit a splice cover (CWASC) at
each splice joint location and
also a drainage spout
(SPOUTHI) in the transom
area just above the splice
joint.



CWASC
Splice cover

Splice cover to be slid into the top
or bottom profile and when
mullions are set on site slide it
over the splice joint and seal.

